

INSTRUCTIONS FOR RELINING BENCH
SOLDERING FURNCE

1. REMOVE HINGE BOLT
2. REMOVE THE OLD LINING FROM THE TOP AND BOTTOM CASTINGS.
3. IF THE ANGLE IRON NEEDS REPLACING, REMOVE IT AND REPLACE IT WITH THE NEW ONE.
4. IF YOUR OLD LINING RETENTION CLIPS ARE IN GOOD CONDITION, LEAVE THEM IN PLACE, OTHERWISE REMOVE THE CLIPS.
5. REPLACE THE OLD CLIPS, IF NECESSARY, BY USING THE SCREWS AND NUTS FURNISHED. IF YOU HAVE AN OLDER MODEL THAT DOES NOT HAVE HOLES FOR THE CLIPS, USE THE CLIPS AS A TEMPLATE AND DRILL 13/64 HOLES.
6. THE INSULATION MATERIAL MUST BE KEPT IN THE PLASTIC SACKS TO STAY MOIST. DO NOT REMOVE IT UNTIL YOU ARE READY TO USE IT. IF FOR SOME REASON IT HAS DRIED OUT, ADD WATER TO THE FELT UNTIL IT BECOMES PLIABLE AGAIN.
7. USE A BRUSH OR STICK AND PUT A FEW SPOTS OF CEMENT ON THE TOP CASTING. POSITION THE FELT INSULATION AND PRESS INTO PLACE WITH YOUR FINGERS.
8. REPEAT THIS PROCEDURE AND LINE THE BOTTOM CASTING.
9. ALLOW THE 2 SECTIONS TO DRY FOR 24 HOURS AND THEN ASSEMBLE THE SECTIONS TOGETHER.

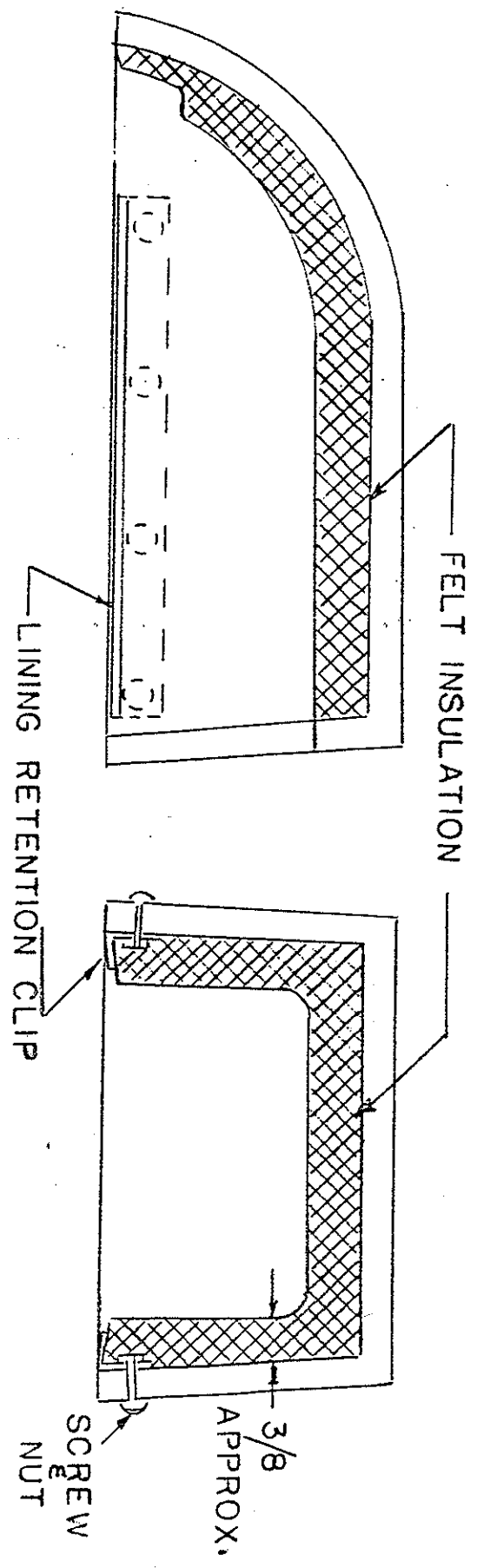
MATERIAL FOR RELINING NO. 108 FURNACE

SHIPPED	REQUIRED	
_____	<u>1 SET</u>	Felt lining for top
_____	<u>1 SET</u>	Felt lining for bottom
_____	<u>4</u>	Lining retention clips
_____	<u>16</u>	#8-32 x 1/2 R.H.M.S. with nuts
_____	<u>1</u>	Angle iron
_____	<u>2</u>	1/4-20 x 1/2 F.H.M.S.
_____	<u>1</u>	1/2 pint #36 cement

NO 108 TOP LINING

FORM NO 1224

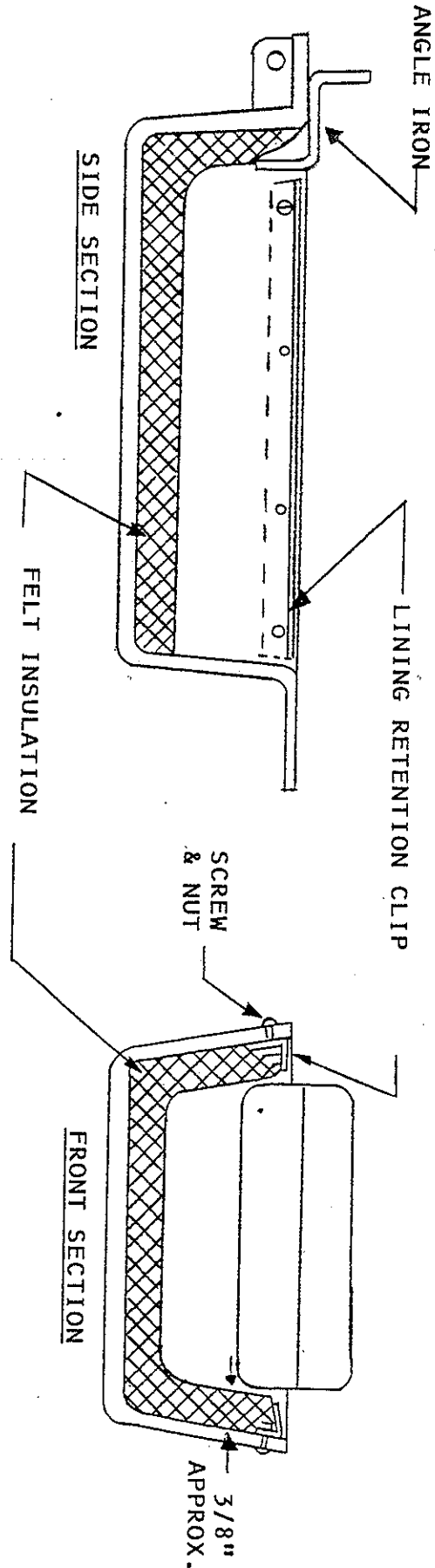
IF YOUR OLD LINING CLIPS ARE IN GOOD CONDITION LEAVE THEM IN PLACE. IF NOT, USE THE NEW CLIPS WITH THE NUTS AND SCREWS. IF YOU HAVE AN OLDER MODEL WITHOUT HOLES, USE THE CLIPS AS A TEMPLATE AND DRILL $13/64$ HOLES.



SIDE SECTION

FRONT SECTION

NO. 108 - NO. 118 BOTTOM LINING



IF YOUR OLD LINING CLIPS ARE IN GOOD SHAPE LEAVE THEM IN PLACE.
IF NOT, USE THE NEW CLIPS WITH THE NUTS & SCREWS.
IF YOU HAVE AN OLDER MODEL WITHOUT HOLES USE THE CLIPS AS A TEMPLATE AND DRILL 13/64 HOLES.

JOHNSON GAS APPLIANCE COMPANY
CEDAR RAPIDS, IA. 52405