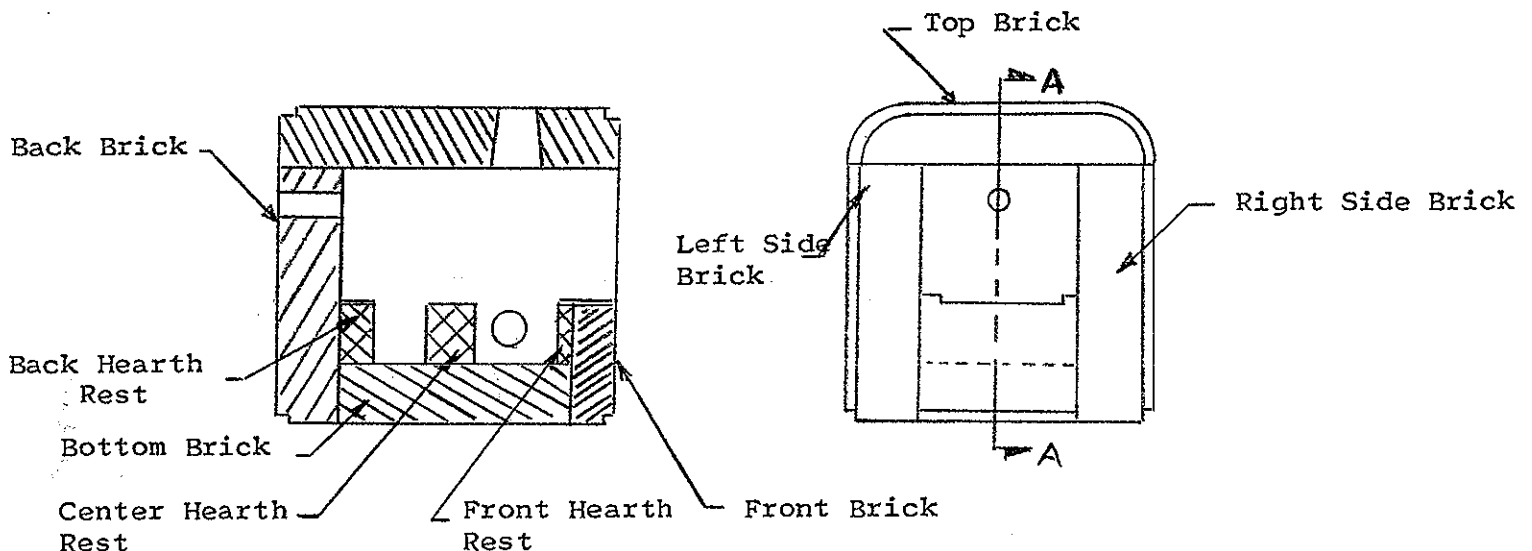


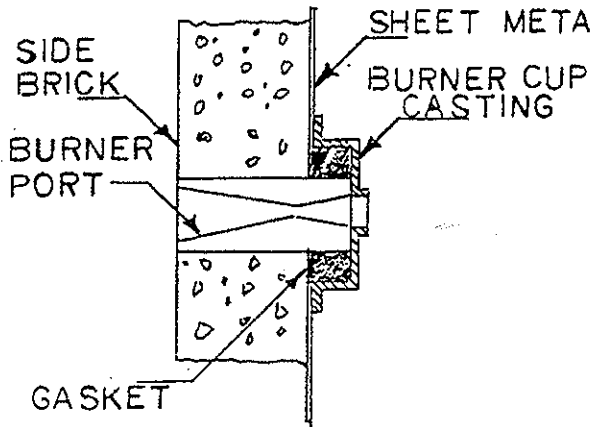
INSTRUCTIONS FOR LINING #120 FURNACE

1. PLACE SIDE BRICK ON LEFT SIDE OF FURNACE, AS FURNACE FACES YOU.
2. PUT SMALL AMOUNT OF CEMENT ON LEFT SIDE OF BACK BRICK AND SET IT IN PLACE WITH ARROWS POINTING UPWARD.
3. PUT SMALL AMOUNT OF CEMENT ON LEFT SIDE AND BACK OF BOTTOM BRICK AND PLACE IN POSITION.
4. PUT CEMENT ON RIGHT SIDE OF BOTTOM AND BACK BRICK AND POSITION RIGHT SIDE BRICK.
5. CEMENT THE TOP OF THE TWO SIDE BRICKS AND BACK BRICK AND SLIDE THE TOP BRICK INTO POSITION.
6. CHECK ALL CEMENTED JOINTS, MAKING SURE ENOUGH CEMENT HAS BEEN USED.
7. PLACE CEMENT ON FRONT OF BOTTOM BRICK AND BOTH SIDES OF FRONT BRICK. POSITION FRONT BRICK. CEMENT ENTIRE FRONT SURFACE AND REPLACE FRONT CASTING.
8. SEE FORM 1069 FOR INSTALLING BURNER PORT.
9. PLACE CEMENT ON SIDE AND BOTTOM OF FRONT AND REAR HEARTH RESTS. PLACE IN POSITION AT FRONT AND BACK OF FURNACE. CEMENT CYLINDRICAL CENTER HEARTH REST IN CENTER OF FURNACE BOTTOM. POSITION HEARTH PLATE.

NOTE: IF YOU HAVE A GAS PILOT BURNER ON THE RIGHT SIDE OF THE FURNACE (AND DID NOT SPECIFY THIS ON YOUR ORDER) USE A 2" HOLE SAW & DRILL THE OPENING FOR THE PILOT PORT. NOTIFY OUR FACTORY THAT YOU REQUIRE A 120 PILOT PORT WITH INSTALLATION INSTRUCTIONS.



REPLACING PORT & GASKET IN OVEN FURNACES



Break the union in the piping. Loosen the screws and remove the cup casting. Remove the old gasket and any cement from the cup casting.

If the burner port is cracked or deteriorated remove it by tapping the sides lightly to break it loose or crack it. Remove any chunks of cement that remain on the side brick.

If the burner port is okay and doesn't have to be removed. Place the new burner port (provided) in the center of the burner cup casting, with the small port hole against the casting. Fasten the port in position using

the holding fixture provided. (See sketch at bottom of page.) Place the gasket strip inside the cup casting and around the burner port. Using your thumbs or a block of wood, press the gasket material down, inside the cup casting until it is just above the top of the cup casting.



Disassemble the holding fixture and remove the burner port by rotating it gently. Put a thin layer of cement around the outside of the burner port that is in the side brick. Put a thin layer of cement on the side brick next to the burner port.

Slide the gasket and cup casting over the burner port by rotating the cup casting. Line up the holes in the sheet metal side and cup casting. Tighten the screws and pull the cup casting against the sheet metal side. Make sure the end of the burner port is against the cup casting and the holes through the center are lined up and clear of cement. If the old burner port is to be replaced, repeat the same procedure as above except do not remove the burner port from the cup casting. Put a 1/8" layer of cement around the outside of the burner port. Insert the port through the hole in the side brick. Line up the holes in the sheet metal and cup casting. Use the screws and draw the burner port and cup casting in place. Make sure the end of the burner port is against the cup casting and the holes through the center are lined up and clear of cement. If the hole in the side brick was too large, fill in the space with cement. Allow the cement to set for about one hour, then gently, remove the holding fixture and proceed to another port.

