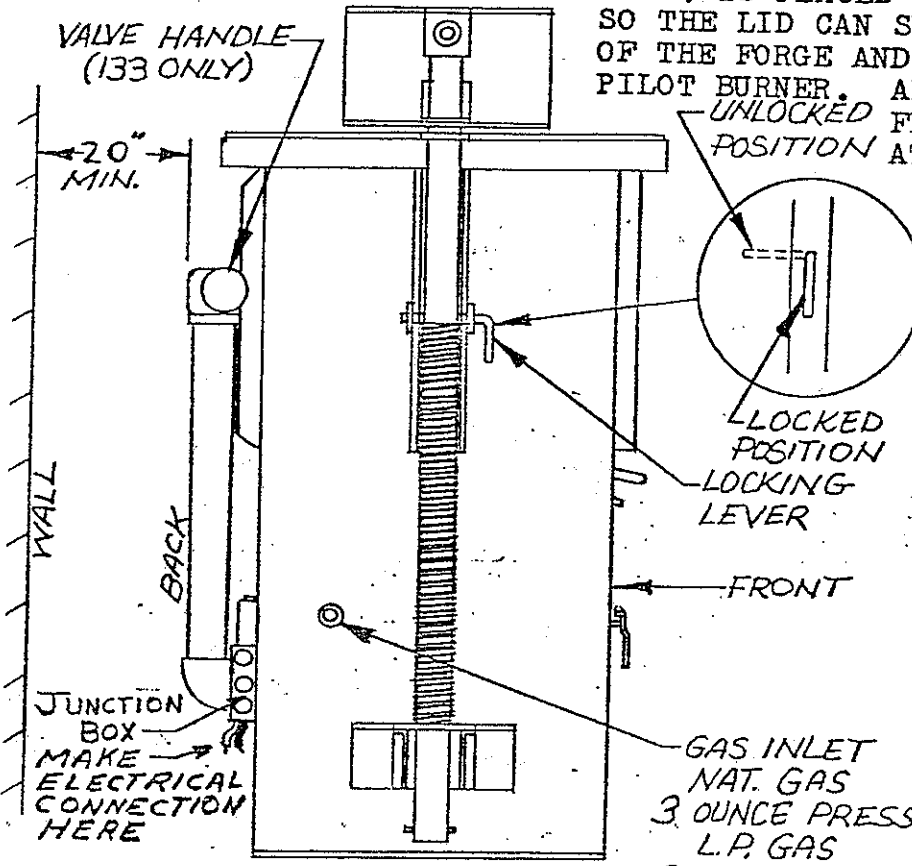


INSTALLATION INSTRUCTIONS FOR #133 & #122 FORGES WITH SAFETY EQUIPMENT ONLY OR SAFETY & START-STOP STATION

WHEN PLACING THE FORGE IN THE DESIRED LOCATION, MAKE SURE THE BACK OF THE FORGE (BURNER SIDE) IS PLACED FAR ENOUGH AWAY FROM ANY WALL SO THE LID CAN SWING AWAY FROM THE TOP SLOT OF THE FORGE AND THERE IS ROOM TO LIGHT THE PILOT BURNER. ALLOW ENOUGH CLEARANCE AT THE FRONT OF THE FORGE FOR THE OPERATOR TO PERFORM HIS DUTIES.



SKETCH "C"

NEARBY WALLS, CEILINGS, ETC., SHOULD BE PROTECTED FROM RADIANT HEAT WITH INSULATION BOARD OR SHEET METAL, ETC. CHECK SURFACES WHEN FORGE IS IN OPERATION TO MAKE SURE THEY ARE NOT OVERHEATED.

TO REMOVE EXHAUST GASSES, ETC., USE A HOOD WITH AN EXHAUST FAN. MAKE SURE THAT THE HOOD SIDES ARE HIGH ENOUGH SO THAT THERE IS NO INTERFERENCE WITH THE OPERATOR.

CONNECT 115 VOLT ELECTRICAL SOURCE TO LEADS FROM JUNCTION BOX. (ON BACK SIDE OF FURNACE).

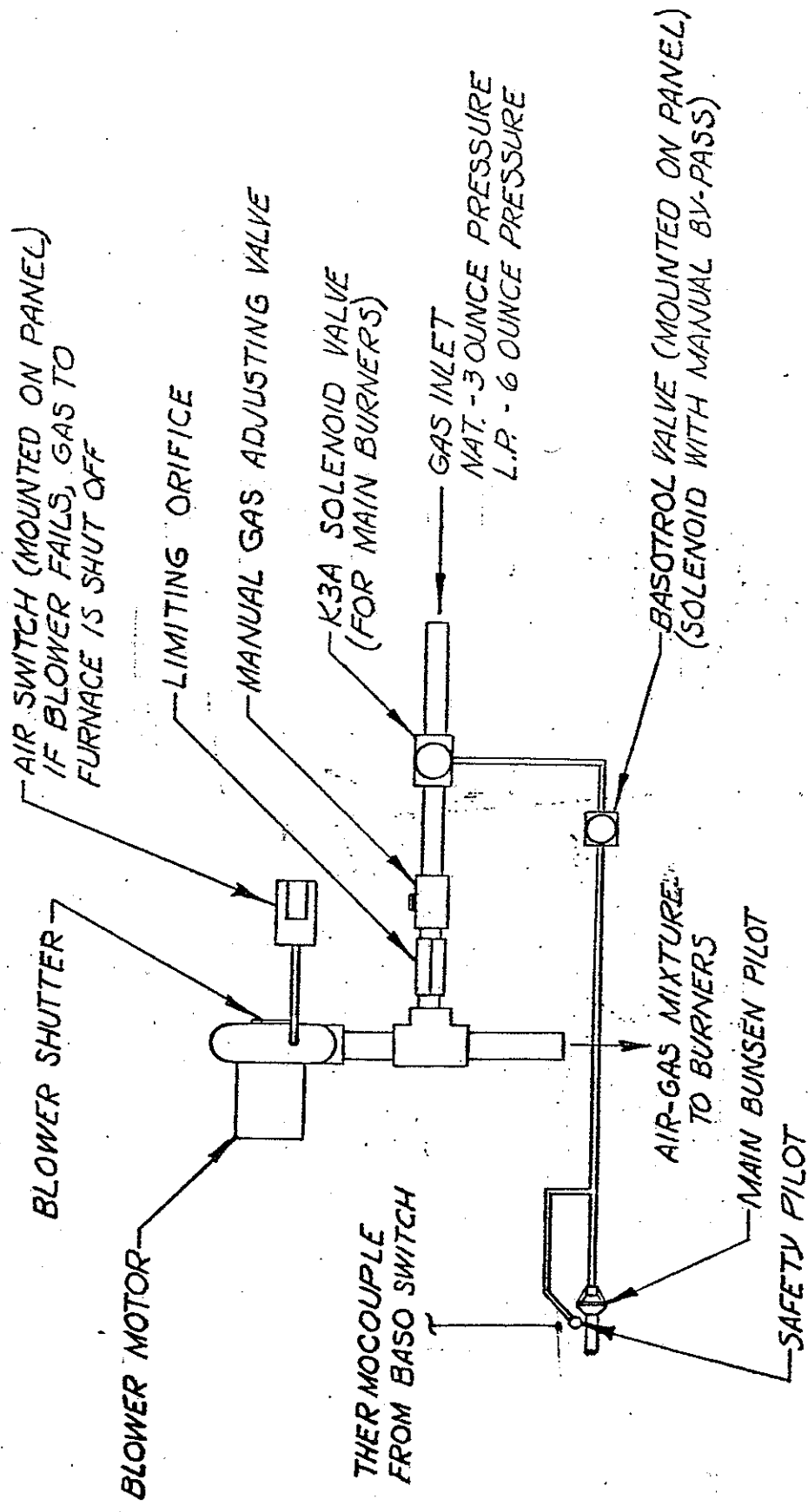
GAS INLET
 NAT. GAS 3 OUNCE PRESSURE
 L.P. GAS 6 OUNCE PRESSURE

CONNECT GAS LINE TO GAS INLET PIPE. THE GAS PRESSURE SHOULD BE 2 TO 3 OUNCES FOR NATURAL AND 6 OUNCES FOR L.P. GAS. PRESSURES

SHOULD BE CHECKED WHEN THE FORGE IS IN OPERATION AT A HIGH RATE.

TO RAISE OR LOWER THE LID, TURN THE LOCKING LEVER TO THE UN-LOCKED POSITION; ADJUST TO THE DESIRED HEIGHT; THEN RETURN LOCKING LEVER TO THE LOCKED POSITION.

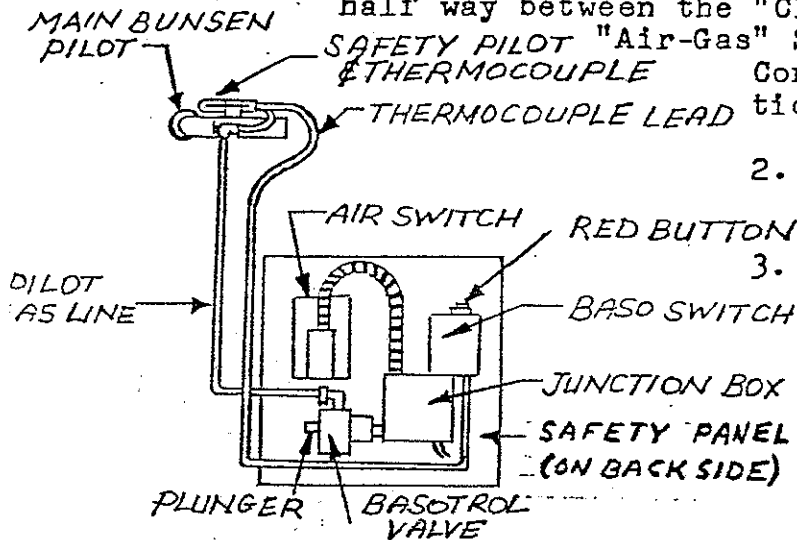
FOR LIGHTING AND OPERATING INSTRUCTIONS, SEE FORM #185 or #187.



PIPING DIAGRAM OF 122 & 133 FORGE FURNACES WITH SAFETY

LIGHTING INSTRUCTIONS FOR #133 & #122 FORGE
WITH SAFETY EQUIPMENT

1. After all wiring and piping are completed, check the control panel at the front of the furnace. Set the Air Control Lever about half way between the "Closed" and "Open" Position. Set the Safety Pilot "Air-Gas" Switch to "Off". Make sure the Gas Control Handle is in the "Closed" Position.



2. Turn on the Main Power and Gas Supply to the Furnace.

3. Depress the plunger on the Basotrol Solenoid Valve and ignite the safety pilot. Keep the plunger depressed until told to release it. The Main Bunsen Pilot should now be burning also.

After the pilots have burned for (45) seconds, depress the red button on top of the Baso Switch. Now re-

lease the red button on the Baso Switch.

After this has been completed, you can now release the plunger on the Basotrol Valve. Both Pilots should still be burning. If not, Repeat Step #3.

4. Swing the lid toward the back side of the furnace so that it is not over the top slot.

5. Turn the "On-Off" Switch (On front of Control Panel) to "On". The blower motor should now be running and the main gas line solenoid valve should be open.

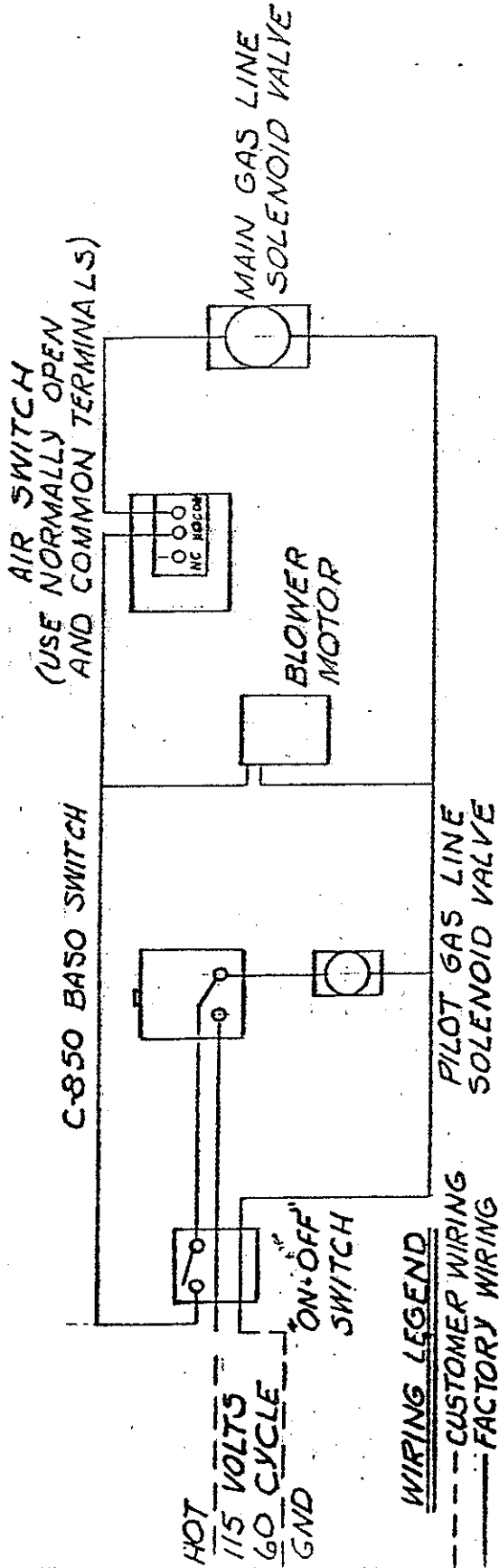
6. With the main bunsen pilot burning and the blower running, slowly turn the gas control handle toward the "Open" Position until the main burners ignite. Adjust the Gas Control to give a sharp tail of flame that extends just above the top of the forge. Work can be placed in the flame. The work rack at the front of the furnace can be slid out to support the work. The lid can be positioned over the top slot. It should be centered over the top slot so that the flame does not hit directly on the metal parts of the lid.

If you desire to increase the amount of gas, turn the Gas Control Handle toward the open position to get a higher flame. Then, turn the Air Control Handle toward the open position to obtain the sharp tail of flame. Repeat these steps until the desired or maximum gas input is reached.

To decrease the amount of gas, turn the gas control handle toward the closed position until the sharp tail of flame almost disappears. Then, turn the Air Control Lever toward the closed position until the tail of flame re-appears. Repeat this procedure until the desired or minimum gas input is reached.

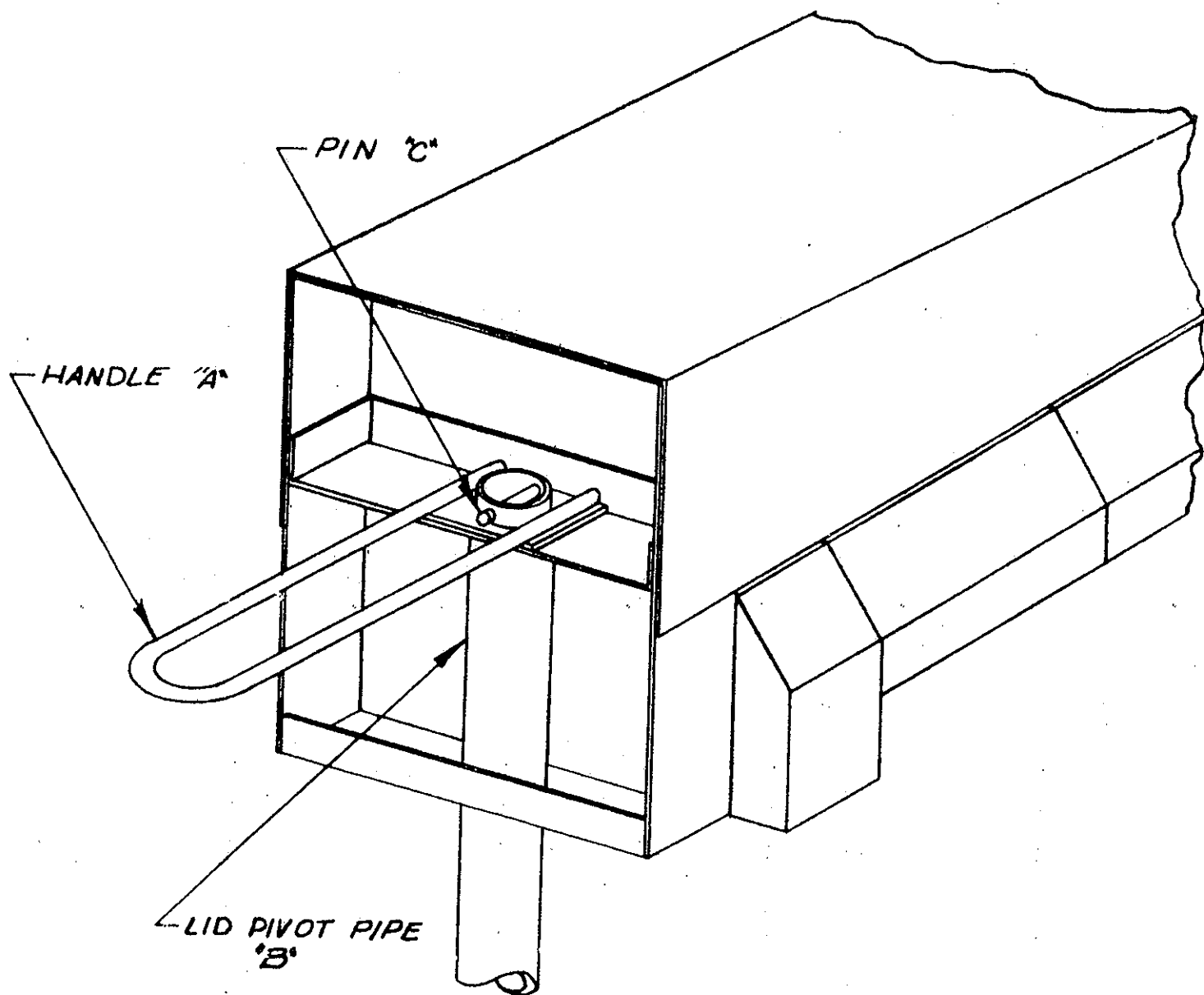
On the #133 Forge, the two (2) outer burners may be turned off by screwing in the round metal discs at each end of the burner manifold.

A-



WIRING DIAGRAM.# BLOWER TYPE FURNACE WITH MANUAL TEMPERATURE CONTROL AND SAFETY

Mat'l	Title		Dwn.	Scale
	JOHNSON GAS APPLIANCE COMPANY		ck'd	
	CEDAR RAPIDS, IOWA		Appr.	
Used On	Date		A-FORM 44	
			1-10-67	

INSTALLING HANDLE ON #122 & #133 FORGE LIDS

1. PLACE HANDLE "A", PLATE SIDE DOWN, OVER TOP OF LID PIVOT PIPE "B".
2. DRIVE PIN "C" THROUGH DRILLED HOLES PROVIDED.