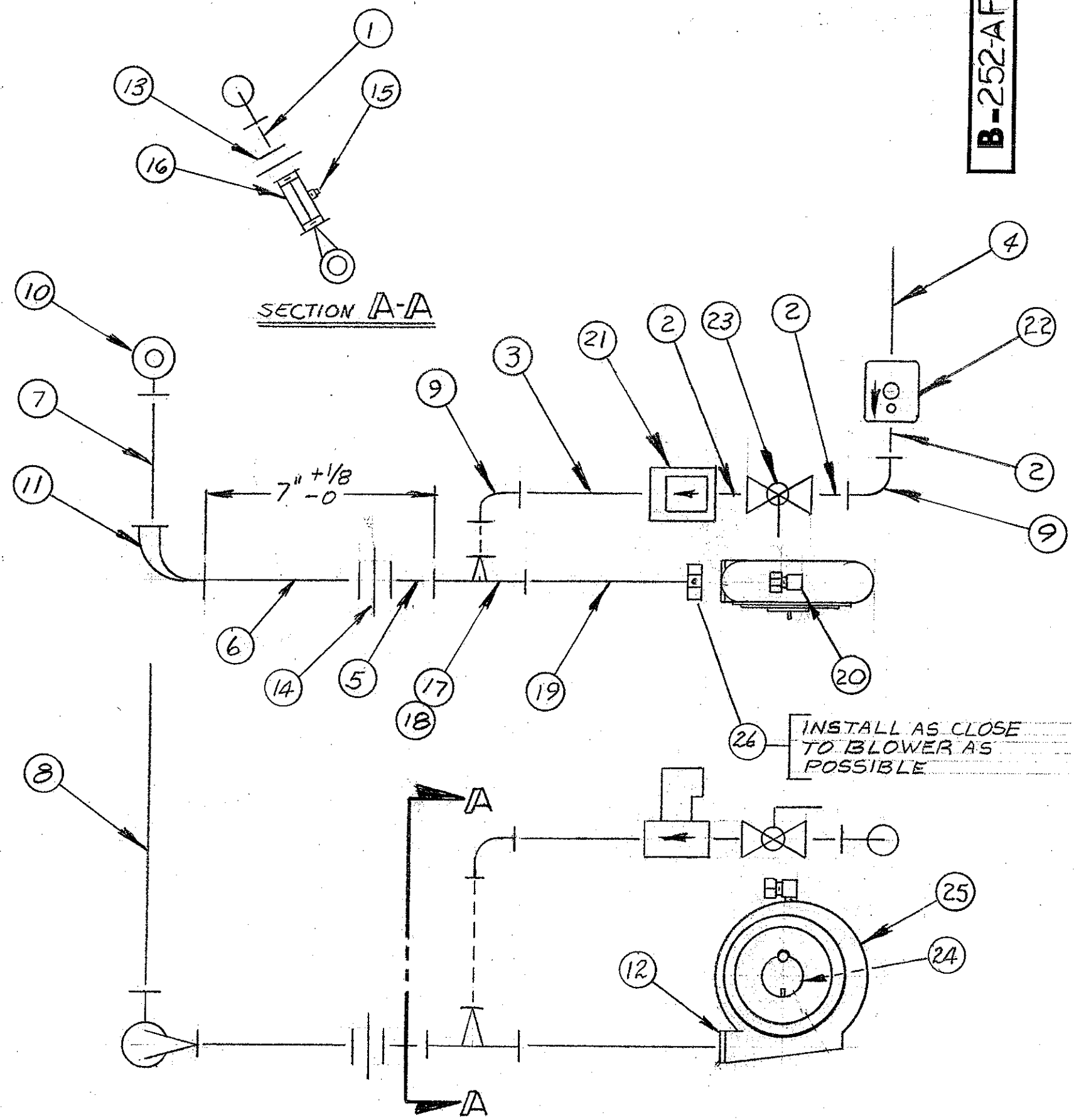


B-252-AF



| ITEM | PART NO. | QTY | DESCRIPTION |
|------|---------------------|-----|---|
| 1 | P-75-1-R | 1 | 3/4" x 1" RUNNING NIPPLE |
| 2 | P-75-C | 3 | 3/4" CLOSE NIPPLE |
| 3 | P-75-4.50 | 1 | 3/4" x 4 1/2" NIPPLE |
| 4 | P-75-6.50 | 1 | 3/4" x 6 1/2" NIPPLE |
| 5 | P-100-200 | 1 | 1" x 2" NIPPLE |
| 6 | P-100-5.50 | 1 | 1" x 5 1/2" NIPPLE |
| 7 | P-200-6.50 | 1 | 2" x 6 1/2" NIPPLE |
| 8 | P-200-19 | 1 | 2" x 19" NIPPLE |
| 9 | FL-75 | 2 | 3/4" x 90° ELBOW |
| 10 | FL-200 | 1 | 2" x 90° ELBOW |
| 11 | FL-200-100 | 1 | 2"-1" x 90° REDUCING ELBOW |
| 12 | FLN-100 | 1 | 1" LOCKNUT |
| 13 | FU-75 | 1 | 3/4" UNION |
| 14 | FU-100 | 1 | 1" UNION |
| 15 | FP-12 1/2 | 1 | 1/8" SQ. HD. PIPE PLUG |
| 16 | 89-15/64 89-9/32 | 1 | LIMITING ORIFICE - 15/64 DRILL - LP LIMITING ORIFICE - 9/32 DRILL - NAT. |
| 17 | A-183-1-B | 1 | 1" x 1" x 3/4" MIXING TEE |
| 18 | A-183-5 | 1 | 1 3/16" AIR JET |
| 19 | A-183-16 | 1 | MIXING TEE INLET NIPPLE - 7 3/8" LG. |
| 20 | A-183-17 | 1 | AIR SCOOP FOR TRIPLE TREAT |
| 21 | 852-2A | 1 | 3/4" K40 SOLENOID VALVE |
| 22 | 862-3 | 1 | 3/4" RV-53 PRESSURE REGULATOR |
| 23 | 970 | 1 | 3/4" GEM BALL VALVE |
| 24 | A-1202-3 | 1 | BLOWER SHUTTER |
| 25 | B-1202-B | 1 | #1202 BLOWER ASSEMBLY |
| 26 | 606-9 | 1 | RACO #2044 SIZE #2 CONDUIT CLAMP FOR 1" PIPE |

NOTE:
1. ARROWS ON SOLENOID VALVE (21) AND PRESSURE REGULATOR (22) INDICATE DIRECTION OF GAS FLOW.

PIPING ASSEMBLY FOR #142 WITH SPARK IGNITION AND SAFETY FOR TRIPLE TREAT

| | | | |
|--|-------------------------------------|--------------------|-----------------|
| Mat'l | Title — (BOTH MANUAL AND AUTOMATIC) | | |
| JOHNSON GAS APPLIANCE COMPANY CEDAR RAPIDS, IOWA | Dwn. | <i>[Signature]</i> | Scale NONE |
| Used On — #252 & #253 | Appr. | | B-252-AF |
| | Date | 3-9-70 | |

A P-75-4.50 WAS P-75-5.50, P-100-200 WAS P-100-C,
P-200-6.50 WAS P-150-6.50, P-100-5.50 WAS P-100-5.25,
P-200-19 WAS P-150-19, FL-200 WAS FL-150, 11-7-79
FL-200-100 WAS FL-150-100, 606-9 ADDED, 7" +1/8-0 ADD.