

⊙

INSTRUCTIONS FOR BLOWER TYPE FURNACE WITH MANUAL
TEMPERATURE CONTROL AND NO SAFETY EQUIPMENT

#142-143

FOR FURNACES WITHOUT SPARK IGNITION, CONNECT THE BLOWER MOTOR TO 115 VOLT ELECTRICAL SOURCE. FOR FURNACES WITH SPARK IGNITION, CONNECT THE TRANSFORMER AND BLOWER AS SHOWN ON THE WIRING DIAGRAM.

CONNECT THE GAS SUPPLY LINE TO THE FURNACE GAS INLET. ON NATURAL GAS, THE PRESSURE SHOULD BE 4" WATER COLUMN MINIMUM TO 14" WATER COLUMN MAXIMUM. ON L.P. GAS, THE PRESSURE SHOULD BE 11" WATER COLUMN. PRESSURE READINGS ARE TO BE TAKEN WITH THE FURNACE IN OPERATION.

SET THE BLOWER AIR SHUTTER ABOUT 1/4" OPEN AND START THE BLOWER MOTOR.

IF YOU HAVE SPARK IGNITION, TURN THE SPARK ON. IF YOU HAVE A GAS PILOT, IGNITE THE PILOT BURNER. IF YOU HAVE AN OVEN FURNACE WITHOUT A PILOT, OPEN THE FRONT DOOR AND HOLD A LIGHTED TAPER OR TORCH SO THAT THE FLAME IS NEAR ONE OF THE BURNERS.

SLOWLY TURN THE NO. 1 LEVER HANDLE VALVE TOWARD THE OPEN POSITION UNTIL YOU REACH THE POINT WHERE THE BURNERS IGNITE. MAKE MINOR ADJUSTMENTS TO THE VALVE TO OBTAIN A STEADY ROAR FROM THE BURNERS. THE DOOR TO THE OVEN TYPE FURNACE CAN BE CLOSED.

FOR FURNACES WITH SPARK IGNITION, THE SPARK CAN BE TURNED OFF AFTER THE BURNERS IGNITE.

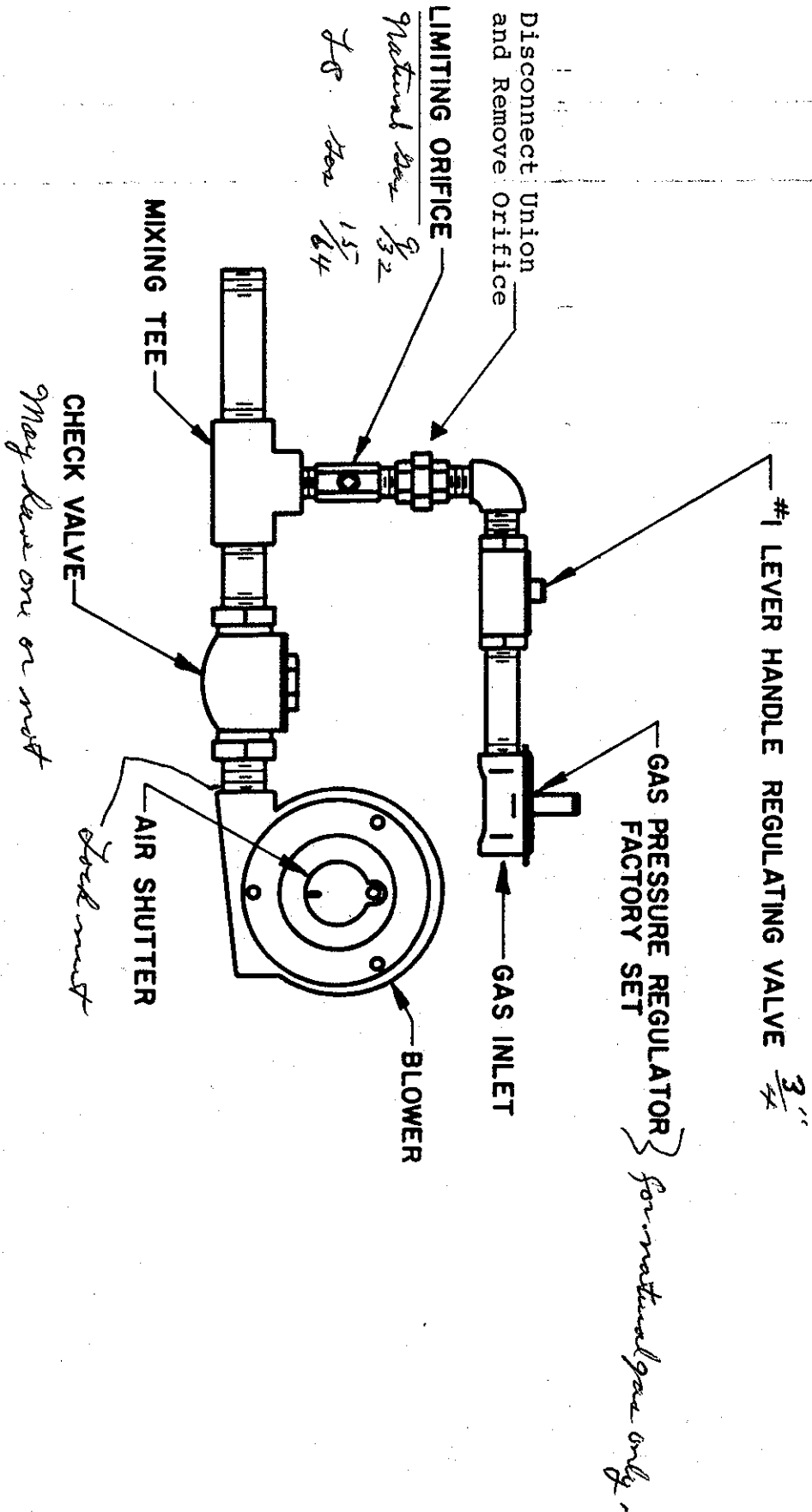
AFTER THE FURNACE HAS WARMED UP, ADJUST THE NO. 1 VALVE TO OBTAIN A SHARP TAIL OF FLAME OUT THE FURNACE EXHAUST OPENINGS. NO FLAME MEANS NOT ENOUGH GAS. A LONG, LAZY FLAME MEANS TOO MUCH GAS.

IF YOU DESIRE TO INCREASE THE GAS INPUT, OPEN THE BLOWER SHUTTER A SMALL AMOUNT AND THEN RE-ADJUST THE NO. 1 VALVE TO RE-OBTAIN THE SHARP TAIL OF FLAME. REPEAT THIS PROCEDURE UNTIL THE DESIRED OR MAXIMUM GAS INPUT IS REACHED.

TO SHUT DOWN THE FURNACE, TURN OFF THE NO. 1 VALVE FIRST AND THEN TURN OFF THE BLOWER MOTOR.

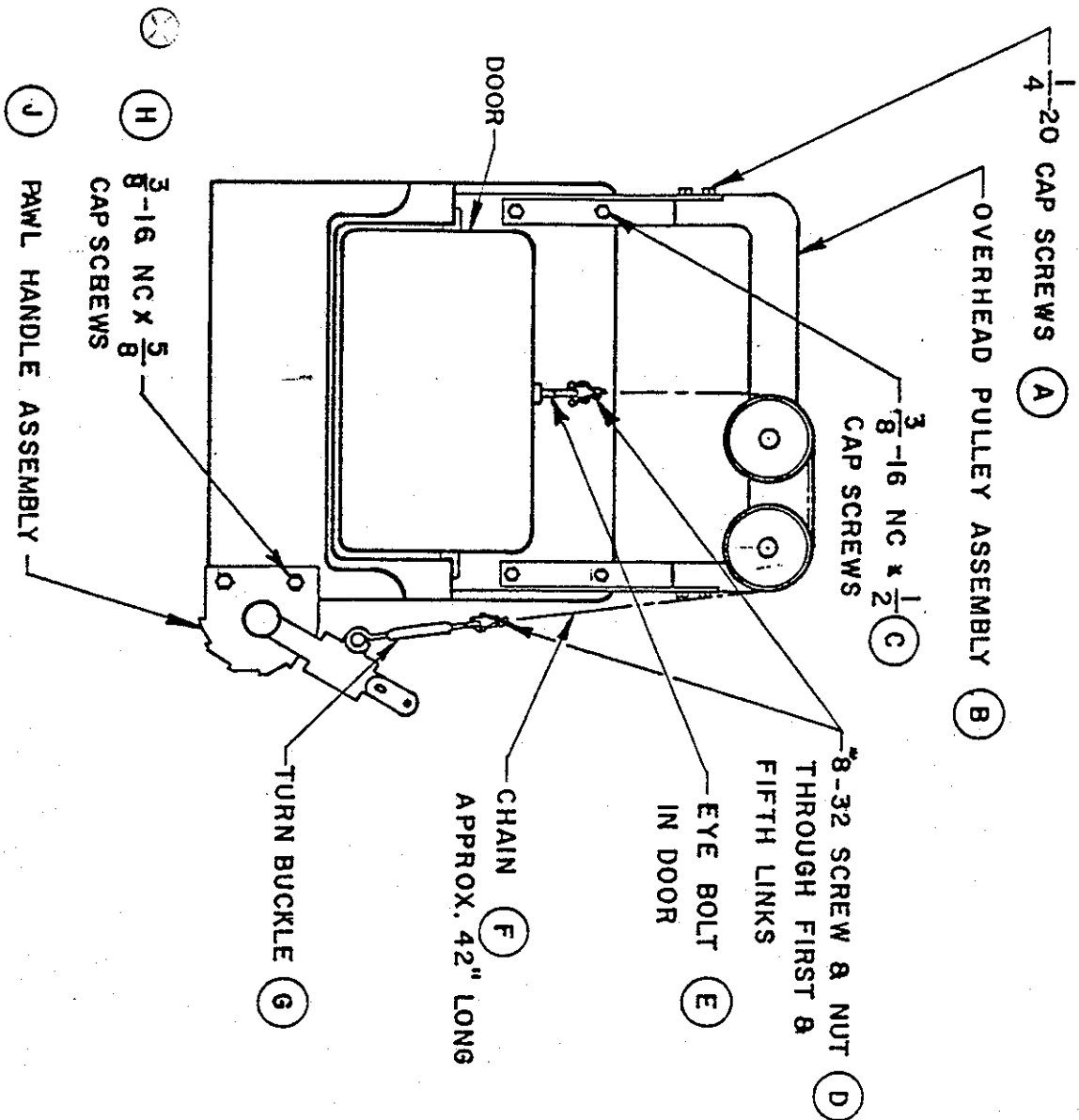
PIPING DIAGRAM-BLOWER TYPE FURNACE WITH MANUAL TEMPERATURE CONTROL ONLY

FORM 38



DOOR ASSEMBLY - FOR - FURNACES NOS. 142-143-175-706

FORM NO. 41



- DOOR ASSEMBLY -

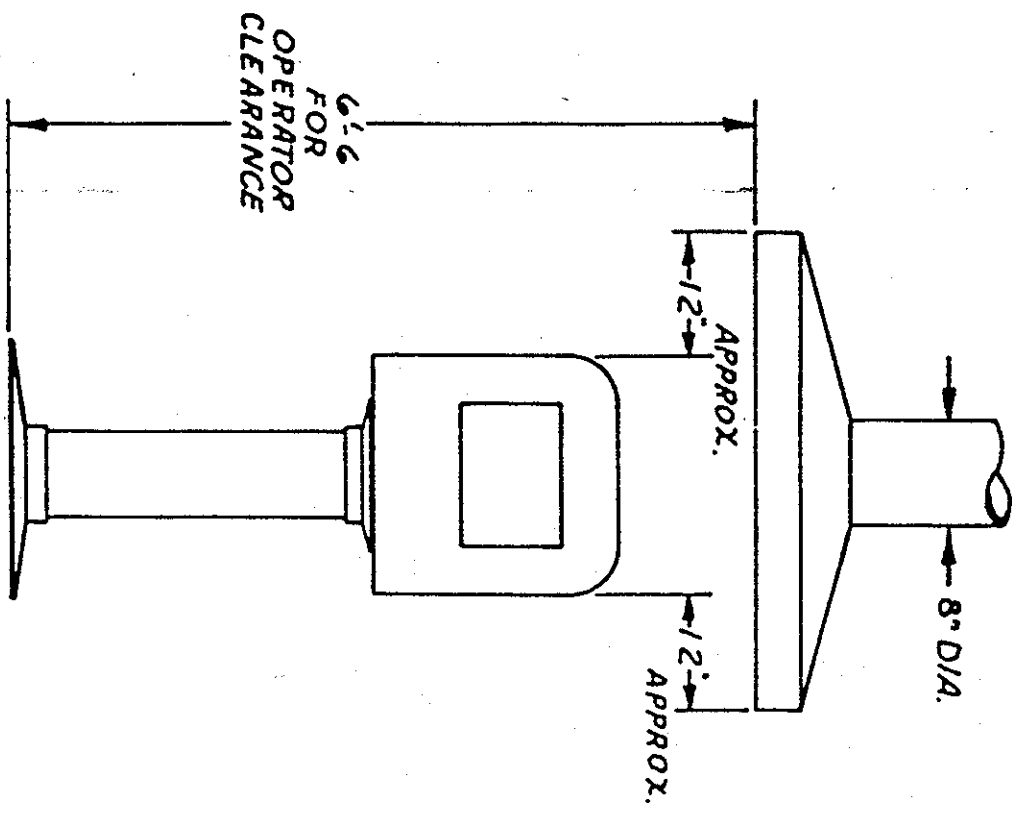
1. LOOSEN SCREWS "A" AND POSITION OVERHEAD PULLEY ASSEMBLY "B" ON DOOR FRAME.
2. FASTEN PULLEY ASSEMBLY "B" TO DOOR FRAME WITH SCREWS "C".
3. TIGHTEN SCREWS "A".
4. FASTEN PAWL HANDLE ASSEMBLY "J" TO DOOR FRAME WITH SCREWS "H".
5. SET THE DOOR IN POSITION AS SHOWN.
6. SET HANDLE IN FIRST NOTCH AND THREAD CHAIN "F" THROUGH PULLEYS.
7. LOOSEN TURNBUCKLE "G" AND FASTEN CHAIN TO EYEBOLT "E". [USE 5 CHAIN LINKS]
8. TAKE UP CHAIN SLACK BY TIGHTENING THE TURNBUCKLE.
9. RAISE AND LOWER THE DOOR SEVERAL TIMES AND MAKE MINOR ADJUSTMENTS BY TIGHTENING OR LOOSENING THE TURNBUCKLE.

JOHNSON GAS APPLIANCE CO.
CEDAR RAPIDS, IA 52405

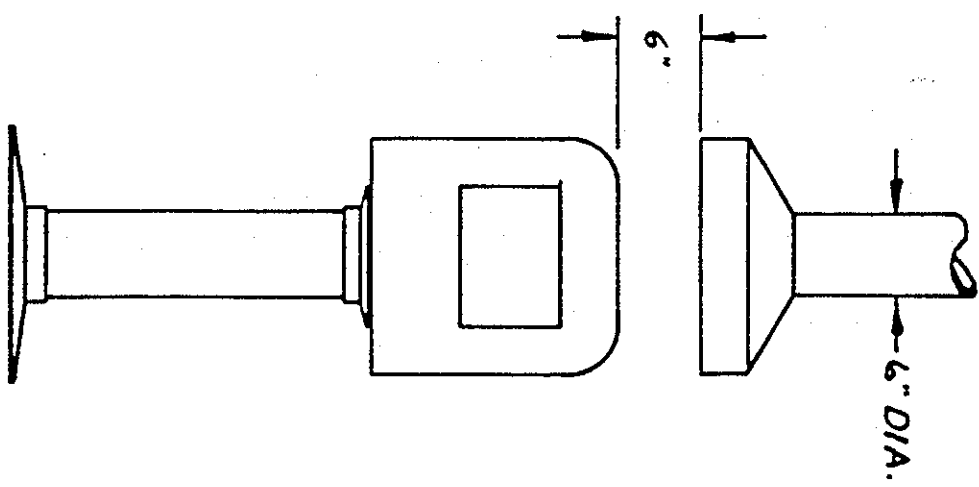
JOHNSON GAS APPLIANCE

FORM NO. 41

SUGGESTED METHODS OF VENTING JOHNSON #125 & #125SL
HEAVY GAUGE SHEET METAL SHOULD BE USED FOR HOOD AND STACK.
CLASS "A" VENT PIPE RECOMMENDED.
FLUE PRODUCT: 160 CFM @ 2000°



METHOD #1
EXHAUST FAN REQUIREMENT:
2000 CFM



METHOD #2
EXHAUST FAN REQUIREMENT:
800 CFM



VENTING REQUIREMENTS FOR
JOHNSON FURNACES

1. POT FURNACES, FORGES, AND MELTING FURNACES.

SINGLE UNITS OR MULTIPLE INSTALLATIONS

FOR EXHAUST HOODS APPROXIMATELY 6' 6" TO 7'
ABOVE FLOOR, THE EXHAUST FAN SHOULD BE
SUFFICIENT TO PROVIDE A 200 FPM FACE
VELOCITY AT THE HOOLD.

2. OVEN TYPE FURNACES [INCLUDES OVEN FORGES]

A. SINGLE INSTALLATIONS:

FOR SINGLE INSTALLATIONS THE VENT REQUIREMENTS
SHOULD REDUCE FLUE GAS TEMPERATURE TO 500 OR
BELOW. FOR CFM REQUIREMENTS, DIVIDE BTU INPUT
OF THE FURNACE BY 225. [APPLICABLE WHERE THE
VENT HOOD IS 6" TO 8" ABOVE EXHAUST OPENING].

B. FOR SINGLE OR MULTIPLE INSTALLATIONS WHEN
SINGLE EXHAUST HOOD IS 6' 6" TO 7' ABOVE
FLOOR, PROVIDE FOR A 200 FPM FACE VELOCITY.